

Instructions for Launching Simulations

Please read before you begin:

- Please read all instructions before you begin the simulation
- There are **several time steps** in the RAC Primer Simulation, please pay attention to the Macro information when starting the simulation
 - You will be asked to play/pause at various time steps.

I. Launch WES-2 Bridge

1. Method 1: Launch from menu (Figure 1)
 - a. Select the “Applications” menu.
 - b. Select “WDTD”.
 - c. Select “WES-2 Bridge”.

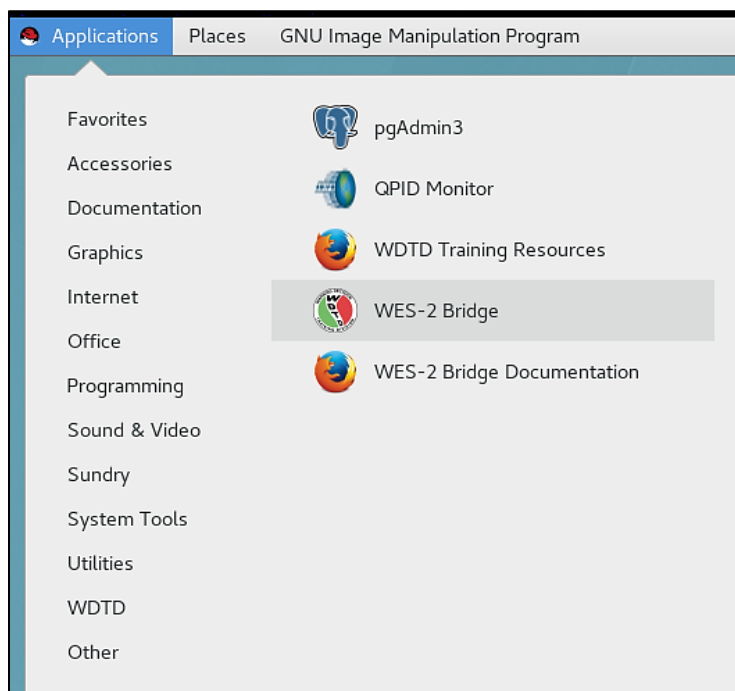


Figure 1. Launching WES-2 Bridge from the menu

II. Check to see if the case is loaded

1. In the “WES II Bridge” window, find the case in the “Available Cases” tab. (i.e., likely titled “2020Apr12JAN_Primer”)
2. Check the case’s status (Figure 2)
 - i. If status is “Not loaded”, then proceed to Step III (Load Case).

- ii. If status is “Loaded”, note which EDEX is used for this case, then proceed to Step IV (Launch the Simulation).

Case Name	Path	Status
2013May31_OUN_AFun_FY19	/data1/wes_cases/2013May31_OUN_AFun_FY19	Not loaded
2018Dec1ILX	/data1/wes_cases/2018Dec1ILX	Not loaded
20190127-CYS-snowsquall RADAR ONLY	/data1/wes_cases/WOC-Winter-radar	Not loaded
2019Apr30SGF	/data1/wes_cases/2019Apr30SGF	Not loaded
2019May27ILN	/data1/wes_cases/2019May27ILN	Loaded
2020Apr12JAN_Primer	/data1/wes_cases/2020Apr12JAN_Primer	Loaded

Figure 2. Available Cases tab, with case “loaded” (boxed in red)

- iii. If status is “Loaded”, note which EDEX is used for this case, then proceed to Step IV (Launch the Simulation).

III. Load the case

1. In the “Available Cases” tab, right-click the case name and click “Load Case” (Figure 3).

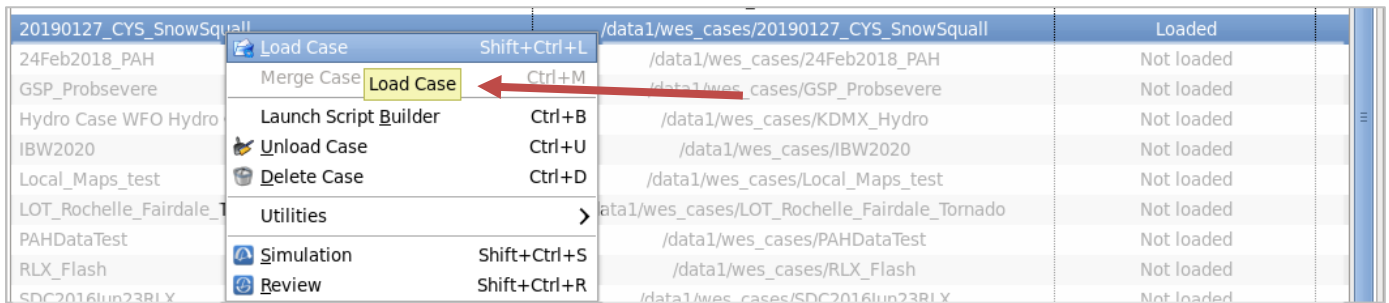


Figure 3. Right-click case name and select “Load Case”

- a. If a window appears saying “All EDEXs are full” (Figure 4), click OK and unload a loaded case from your “Available Cases” list. Once you do this, try again to “Load Case”, as described above.

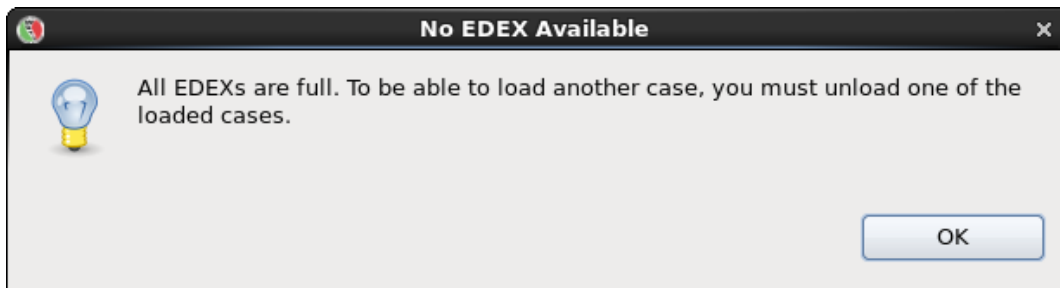


Figure 4. No EDEX Available window

- b. If a window appears saying “Do you want WES to start EDEX?” (Figure 5), click “Yes”.
 - i. This will start an EDEX, and then open the “Load Case” tab.

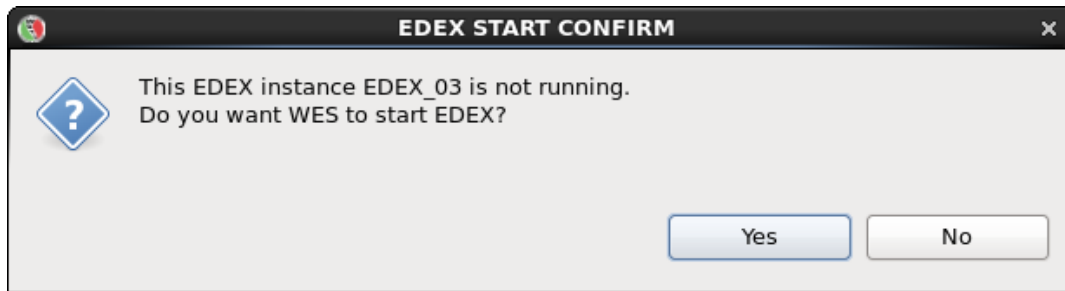


Figure 5. EDEX Start Confirm window

2. Ensure all details are correct in the “Load Case” tab (Figure 6).
 - a. Do NOT change the time window for loading the case!
3. Click “Load” (NOTE: it could take up to an hour to load, but normally it is much faster, about 15-30 minutes or so).

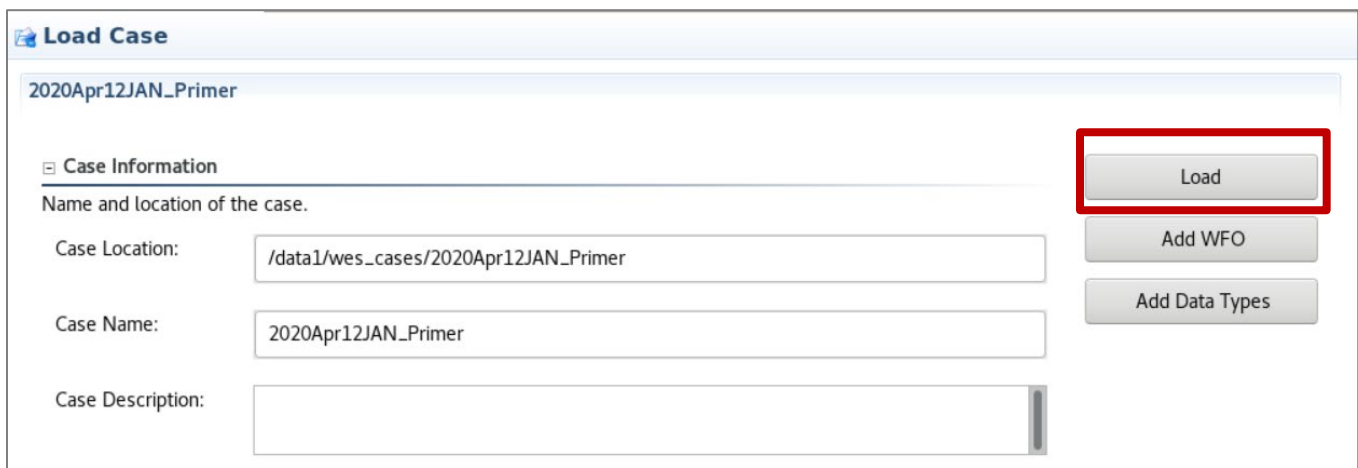


Figure 6. Load Case window, with “Load” boxed in red

IV. Launch the simulation

1. Once the case is done loading, the status will read “Loaded”.
2. Right-click the case name again, and click “Simulation” (Figure 7).

Case Name	Actions	Path	Status
20190127_CYS_Snow	Load Case (Shift+Ctrl+L)	/data1/wes_cases/20190127_CYS_SnowSquall	Loaded
24Feb2018_PAH	Merge Case (Ctrl+M)	/data1/wes_cases/24Feb2018_PAH	Not loaded
GSP_Probsevere	Launch Script Builder (Ctrl+B)	/data1/wes_cases/GSP_Probsevere	Not loaded
Hydro Case WFO Hyd	Unload Case (Ctrl+U)	/data1/wes_cases/KDMX_Hydro	Not loaded
IBW2020	Delete Case (Ctrl+D)	/data1/wes_cases/IBW2020	Not loaded
Local_Maps_test	Utilities (>)	/data1/wes_cases/Local_Maps_test	Not loaded
LOT_Rochelle_Fairdale	Simulation (Shift+Ctrl+S)	/data1/wes_cases/LOT_Rochelle_Fairdale_Tornado	Not loaded
PAHDataTest	Review (Shift+Ctrl+R)	/data1/wes_cases/PAHDataTest	Not loaded
RLX_Flash		/data1/wes_cases/RLX_Flash	Not loaded
SDC2016Jun23RLX		/data1/wes_cases/SDC2016Jun23RLX	Not loaded

Figure 7. Available Cases tab, with case being run as a “Simulation”

3. On the “Simulation” tab, click “Load Macro” (Figure 8).
 - i. You may need to scroll to the far right to see these buttons

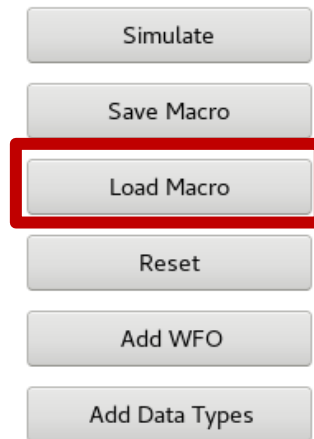


Figure 8. “Load Macro” on the right side of the Simulation tab

4. In the Macro Selection GUI, choose the **Primer1** macro for the corresponding simulation application, and press OK (Figure 9).

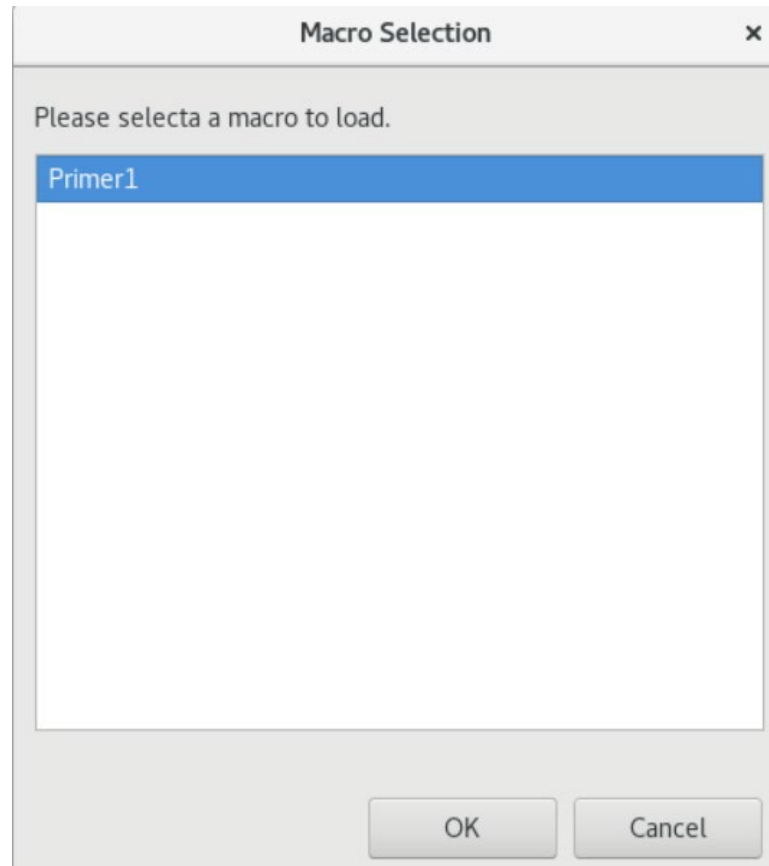


Figure 9. Macro Selection window

5. Using Table 1 and Figure 10, ensure all details are correct in the “Simulation” tab for the given simulation application, particularly:
 - i. Simulation Start – 2020-04-12 1800
 - ii. Simulation End – 2020-04-13 0000
6. Click “Simulate” (A pop-up window will appear, and CAVE will open). An “invalid localization” window may pop up saying the selected localization is invalid. Click Yes. A CAVE will pop up, along with a Sim Control.

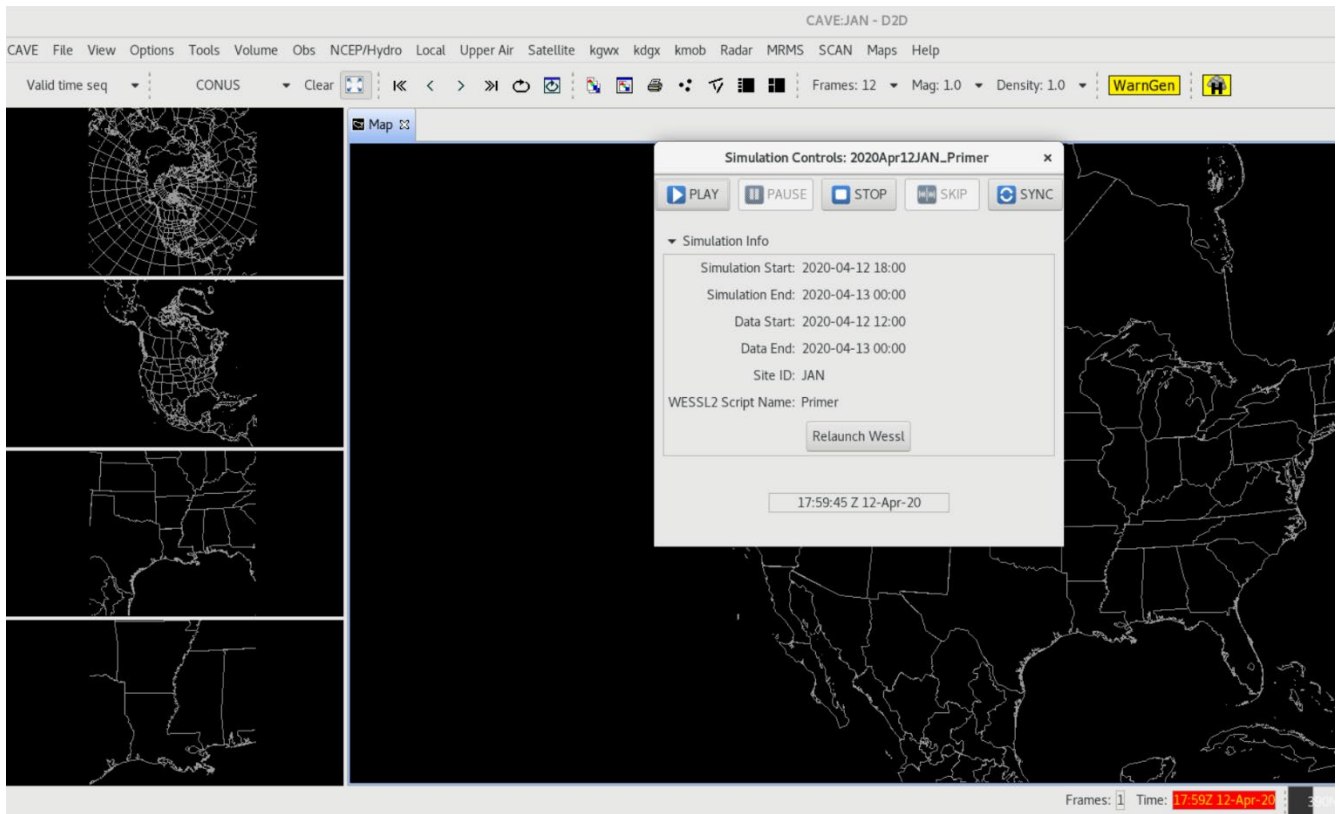


Figure 10. CAVE, WESSL and sim control window.

Simulation (Table 1)	
Macro	RAC Primer Macro
Simulation Data Time Range Start Date	2020-04-12 18:00
Simulation Data Time Range End Date	2020-04-13 00:00
WESSL Script	None

V. Begin the simulation

1. Once CAVE has opened, find the Simulations Control GUI (Figure 11).

NOTE: While this GUI is often covered by other windows that WES-2 Bridge opens, you can easily find it by clicking on its tab in the bottom panel of your desktop.

2. Click Simulate. The simulation will start out in a paused mode at 1759Z on April 12, 2020, as in Figure 11.



Figure 11. Simulation Control GUI

VI. [Simulation Application #2] Open a Text Workstation

1. In CAVE, open the “CAVE” menu.
2. Select “New”.
3. Then select “Text Workstation” (Figure 12).

NOTE: This MUST be opened in order to use WarnGen!

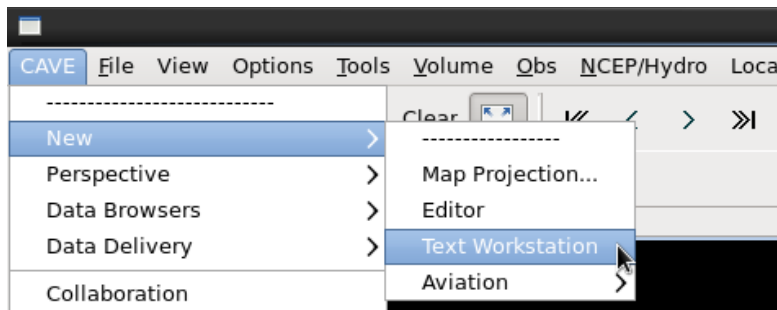


Figure 12. Opening a new text workstation in CAVE