

Instructions for Launching Simulations

Please read before you begin:

- Please read all instructions before you begin the simulation
- There is an accompanying module to guide you through each section of the simulation
 - If the module does not automatically pop up when starting the simulation, please check to see if you started EDEX_00 as it is necessary to start EDEX_00 and the EDEX the case is loaded on to successfully go through the simulation.
- There are **two parts** to the WOC Winter Simulation, please pay attention to the Macro information when starting the simulation
 - You must complete both parts of the simulations
 - You will receive a total of 5 codes from the modules that you will need to pass the quiz in the CLC.

I. Launch WES-2 Bridge

1. Method 1: Launch from menu (Figure 1)
 - a. Select the “Applications” menu.
 - b. Select “WDTD”.
 - c. Select “WES-2 Bridge”.

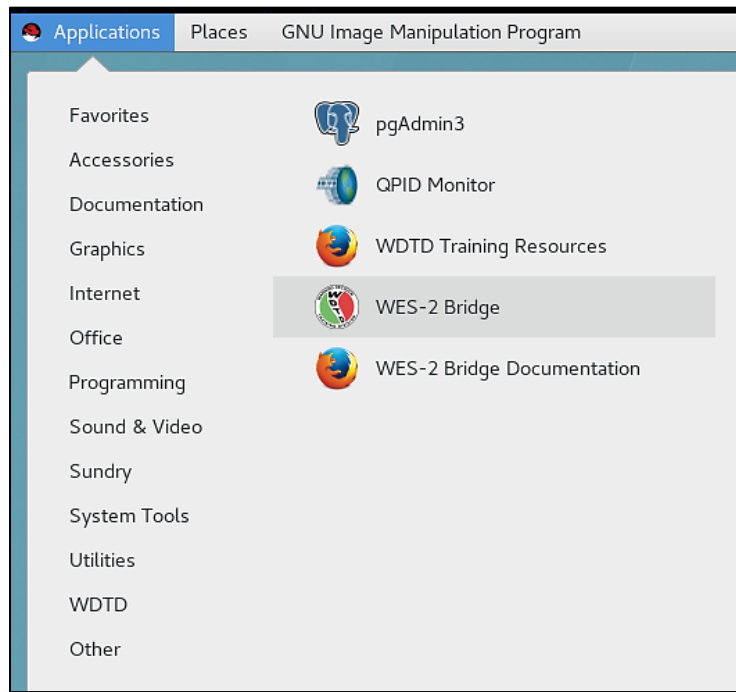
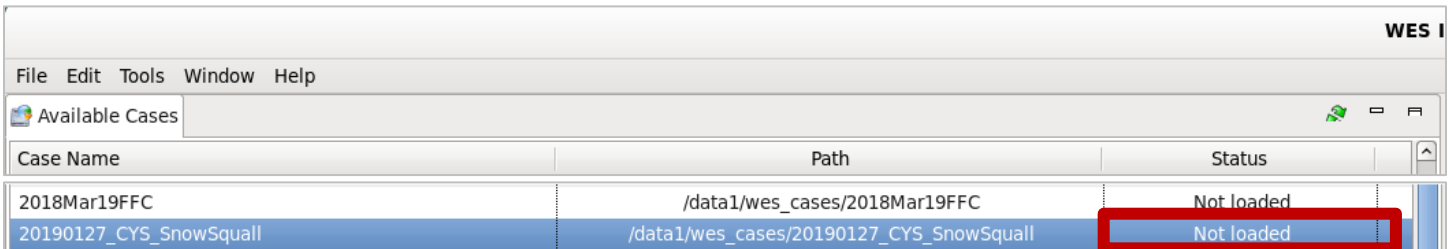


Figure 1. Launching WES-2 Bridge from the menu

II. Check to see if the case is loaded

1. In the “WES II Bridge” window, find the case in the “Available Cases” tab. (i.e., likely titled “20190127_CYS_SnowSquall”)
2. Check the case’s status (Figure 3)
 - i. If status is “Not loaded”, then proceed to Step III (Load Case).



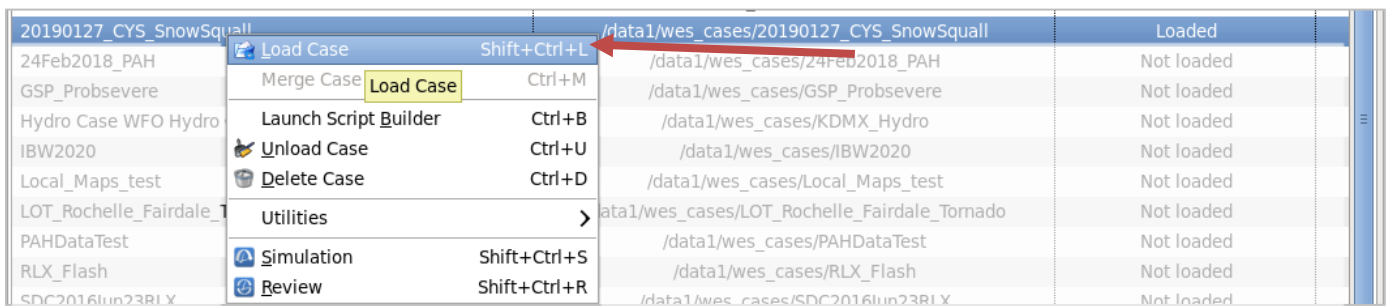
Case Name	Path	Status
2018Mar19FFC	/data1/wes_cases/2018Mar19FFC	Not loaded
20190127_CYS_SnowSquall	/data1/wes_cases/20190127_CYS_SnowSquall	Not loaded

Figure 3. Available Cases tab, with case “Not loaded” (boxed in red)

- ii. If status is “Loaded”, note which EDEX is used for this case, then proceed to Step IV (Launch the Simulation).

III. Load the case

1. In the “Available Cases” tab, right-click the case name and click “Load Case” (Figure 4).



Case Name	Path	Status
20190127_CYS_SnowSquall	/data1/wes_cases/20190127_CYS_SnowSquall	Loaded
24Feb2018_PAH	/data1/wes_cases/24Feb2018_PAH	Not loaded
GSP_Probsevere	/data1/wes_cases/GSP_Probsevere	Not loaded
Hydro Case WFO Hydro	/data1/wes_cases/KDMX_Hydro	Not loaded
IBW2020	/data1/wes_cases/IBW2020	Not loaded
Local_Maps_test	/data1/wes_cases/Local_Maps_test	Not loaded
LOT_Rochelle_Fairdale	/data1/wes_cases/LOT_Rochelle_Fairdale_Tornado	Not loaded
PAHDataTest	/data1/wes_cases/PAHDataTest	Not loaded
RLX_Flash	/data1/wes_cases/RLX_Flash	Not loaded
SDC2016Jun23RLX	/data1/wes_cases/SDC2016Jun23RLX	Not loaded

Figure 4. Right-click case name and select “Load Case”

- a. If a window appears saying “All EDEXs are full” (Figure 5), click OK and unload a loaded case from your “Available Cases” list. Once you do this, try again to “Load Case”, as described above.

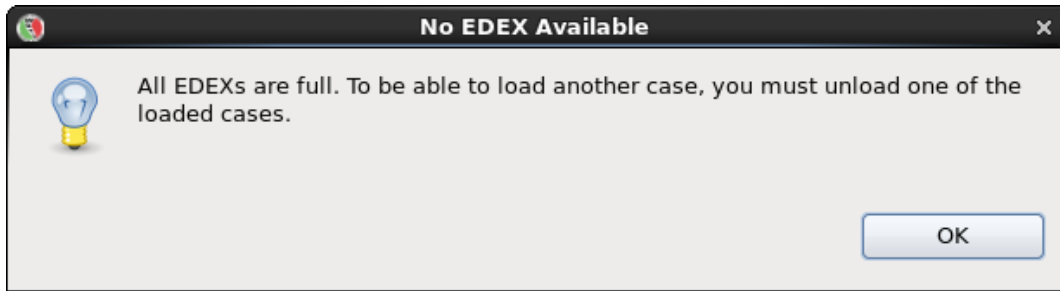


Figure 5. No EDEX Available window

- b. If a window appears saying “Do you want WES to start EDEX?” (Figure 6), click “Yes”.
 - i. This will start an EDEX, and then open the “Load Case” tab.

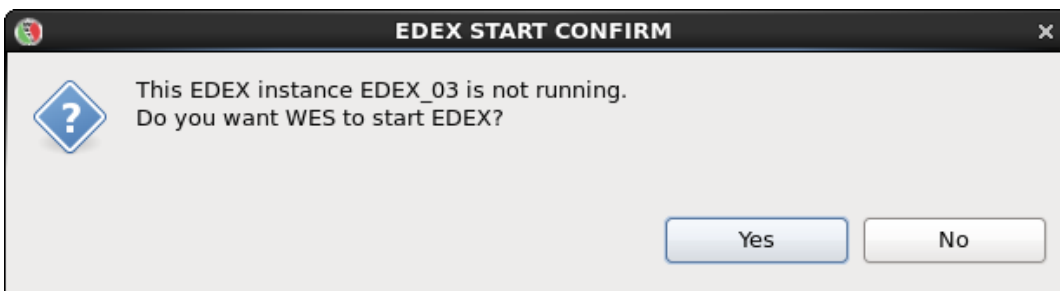


Figure 6. EDEX Start Confirm window

2. Ensure all details are correct in the “Load Case” tab (Figure 7).
 - a. Do NOT change the time window for loading the case!
3. Click “Load” (NOTE: it could take up to an hour to load, but normally it is much faster, about 15-30 minutes or so).

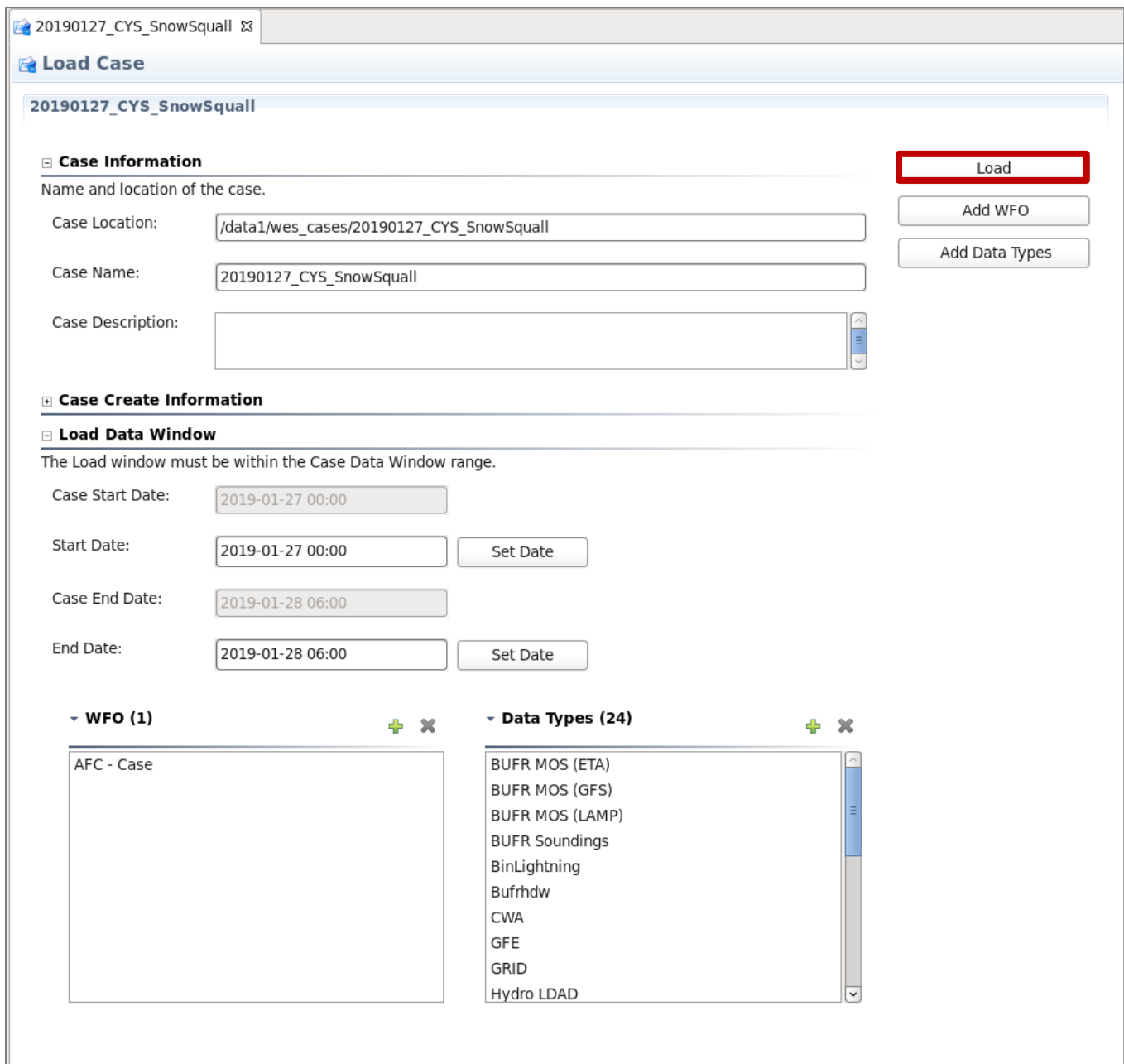


Figure 7. Load Case window, with “Load” boxed in red

IV. Launch the simulation

1. Before starting the simulation, make sure EDEX_00 is “Active” (Figure 8).
 - i. If it is not, right-click EDEX_00 and choose “Start EDEX”.

NOTE: EDEX_00 MUST be active in order to use WESSL!

- ii. If the case was already loaded on an EDEX, you must start that EDEX as well (noted from step

EDEX Instance	Status
EDEX_00	Active
EDEX_01	Not Active
EDEX_02	Active
EDEX_03	Not Active
EDEX_04	Not Active

Figure 8. EDEX instances tab, with EDEX_00 as “Active”

2. Once the case is done loading, the status will read “Loaded”.
3. Right-click the case name again, and click “Simulation” (Figure 9).

Case Name	Path	Status
20190127_CYS_SnowSquall	/data1/wes_cases/20190127_CYS_SnowSquall	Loaded
24Feb2018_PAH	/data1/wes_cases/24Feb2018_PAH	Not loaded
GSP_Probsevere	/data1/wes_cases/GSP_Probsevere	Not loaded
Hydro Case WFO Hydro	/data1/wes_cases/KDMX_Hydro	Not loaded
IBW2020	/data1/wes_cases/IBW2020	Not loaded
Local_Maps_test	/data1/wes_cases/Local_Maps_test	Not loaded
LOT_Rochelle_Fairdale_Tornado	/data1/wes_cases/LOT_Rochelle_Fairdale_Tornado	Not loaded
PAHDataTest	/data1/wes_cases/PAHDataTest	Not loaded
RLX_Flash	/data1/wes_cases/RLX_Flash	Not loaded
SDC2016Jun23RLX	/data1/wes_cases/SDC2016Jun23RLX	Not loaded

Figure 9. Available Cases tab, with case being run as a “Simulation”

4. On the “Simulation” tab, click “Load Macro” (Figure 10).
 - i. You may need to scroll to the far right to see these buttons
 - ii. See figure 12a for button location



Figure 10. “Load Macro” on the right side of the Simulation tab

5. In the Macro Selection GUI, choose the macro for the corresponding simulation application, and press OK (Figure 11).

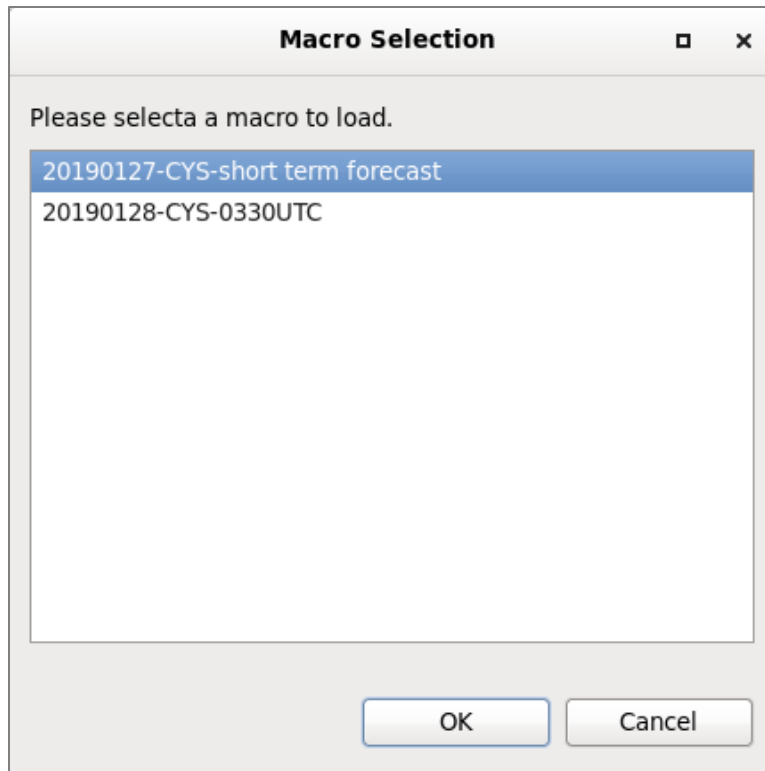


Figure 11. Macro Selection window

6. Using Table 1 (and Figure 12), ensure all details are correct in the “Simulation” tab for the given simulation application, particularly:
 - i. Simulation Data Time Range – Start Date
 - ii. Simulation Data Time Range – End Date
 - iii. WESSL Script
7. Click “Simulate” (A pop-up window will appear, and CAVE will open).

Simulation Application #1	
Macro	20190127-CYS-short term forecast
Simulation Data Time Range Start Date	2019-01-27 23:30
Simulation Data Time Range End Date	2019-01-30 01:00
WESSL Script	W201927CYS2330z
Simulation Application #2	
Macro	20190128-CYS-0330UTC
Simulation Data Time Range Start Date	2018-07-01 03:30
Simulation Data Time Range End Date	2018-07-01 04:45
WESSL Script	20190128CYS0330z

Table 1. Simulation launching details for Application #1 and Application #2

20190127_CYS_SnowSquall (a)

Simulation

20190127_CYS_SnowSquall

Case Information

Name, location, and description of the case

Case Location:

Case Name:

Case Description:

Is Remote

Host - JMS port:

Case Creation Information

Load Data Time Range

The start and end dates of the loaded data must be within the case start and end dates.

Case Start Date:

Start Date:

Case End Date:

End Date:

Simulation Data Time Range

The start and end dates of the simulation must be within the start and end dates of the loaded data.

Start Date:

End Date:

Remove warnings for the WFO

20190127_CYS_SnowSquall (b)

Simulation

20190127_CYS_SnowSquall

Case Information

Name, location, and description of the case

Case Location:

Case Name:

Case Description:

Is Remote

Host - JMS port:

Case Creation Information

Load Data Time Range

The start and end dates of the loaded data must be within the case start and end dates.

Case Start Date:

Start Date:

Case End Date:

End Date:

Simulation Data Time Range

The start and end dates of the simulation must be within the start and end dates of the loaded data.

Start Date:

End Date:

Remove warnings for the WFO

Figure 12. Simulation details for (a) Application #1 and (b) Application #2

V. Begin the simulation

1. Once CAVE has opened, find the Simulations Control GUI (Figure 13).
NOTE: While this GUI is often covered by other windows that WES-2 Bridge opens, you can easily find it by clicking on its tab in the bottom panel of your desktop.
2. Click the “Play” button in the Simulation Controls GUI. The WESSL script should run, and a recorded presentation should begin.

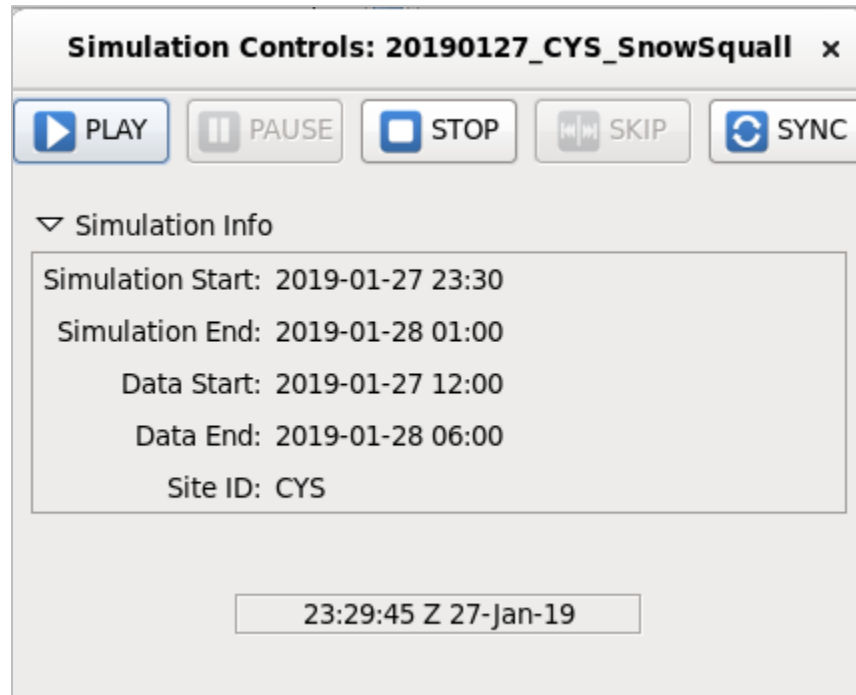


Figure 13. Simulation Control GUI for

VI. [Simulation Application #2] Open a Text Workstation

1. In CAVE, open the “CAVE” menu.
2. Select “New”.
3. Then select “Text Workstation” (Figure 14).

NOTE: This MUST be opened in order to use WarnGen!

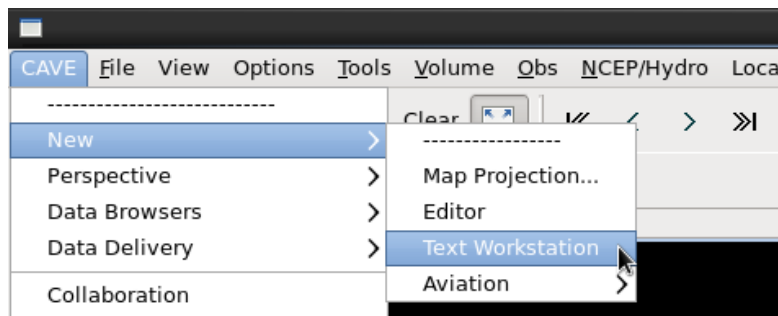


Figure 14. Opening a new text workstation in CAVE